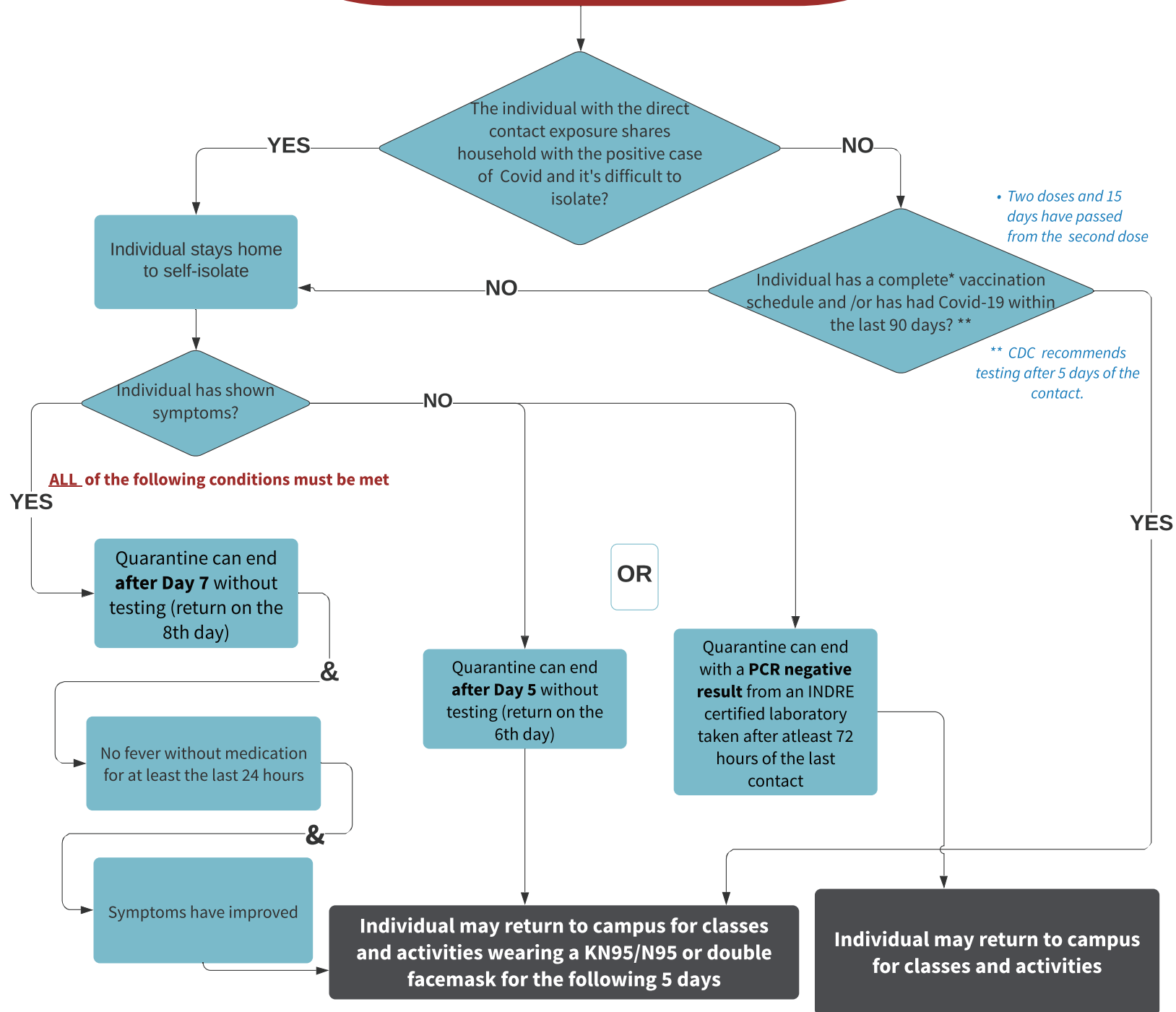


## Individuals with a Direct Contact Exposure of a positive case of COVID-19

*As instructed by ISR or a physician*



• Two doses and 15 days have passed from the second dose

\*\* CDC recommends testing after 5 days of the contact.

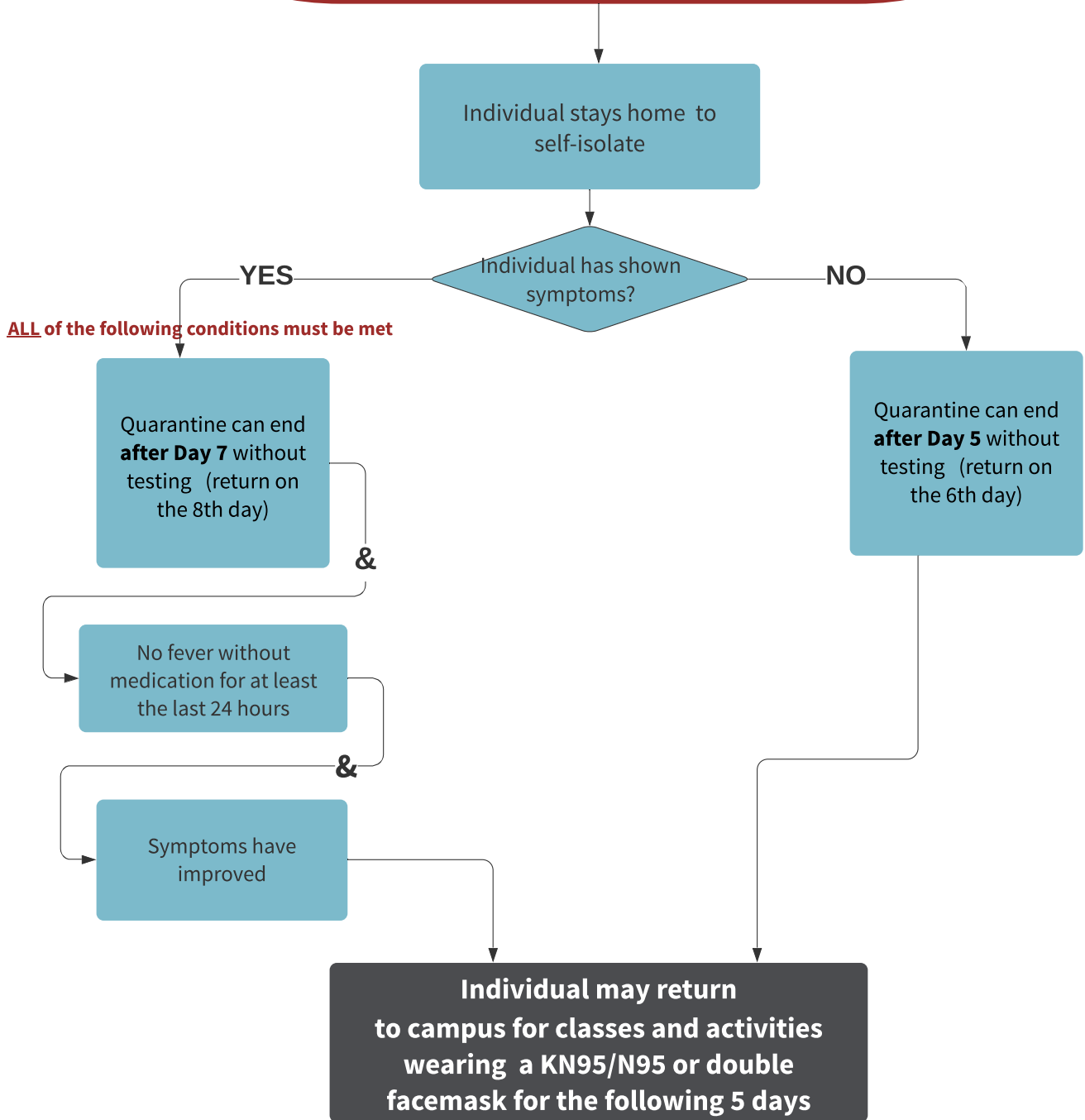
The School will communicate any known positive cases to the school community without identifying the individual's name and will follow guidance from the ISR and other health authorities. Procedures may change based on community conditions and public health best practices.

• Protocol aligned to the CDC (Center of Disease Control and Prevention) recommendations: <https://cdc.gov/coronavirus/2019-ncov/your-health/quarantine-isolation.html>

**Individuals with CONFIRMED COVID-19**  
**Symptomatic and/or asymptomatic**

*(based on a POSITIVE TEST)*

As diagnosed by a health professional institution



The School will communicate any known positive cases to the school community without identifying the individual's name and will follow guidance from the ISR and other health authorities. Procedures may change based on community conditions and public health best practices.